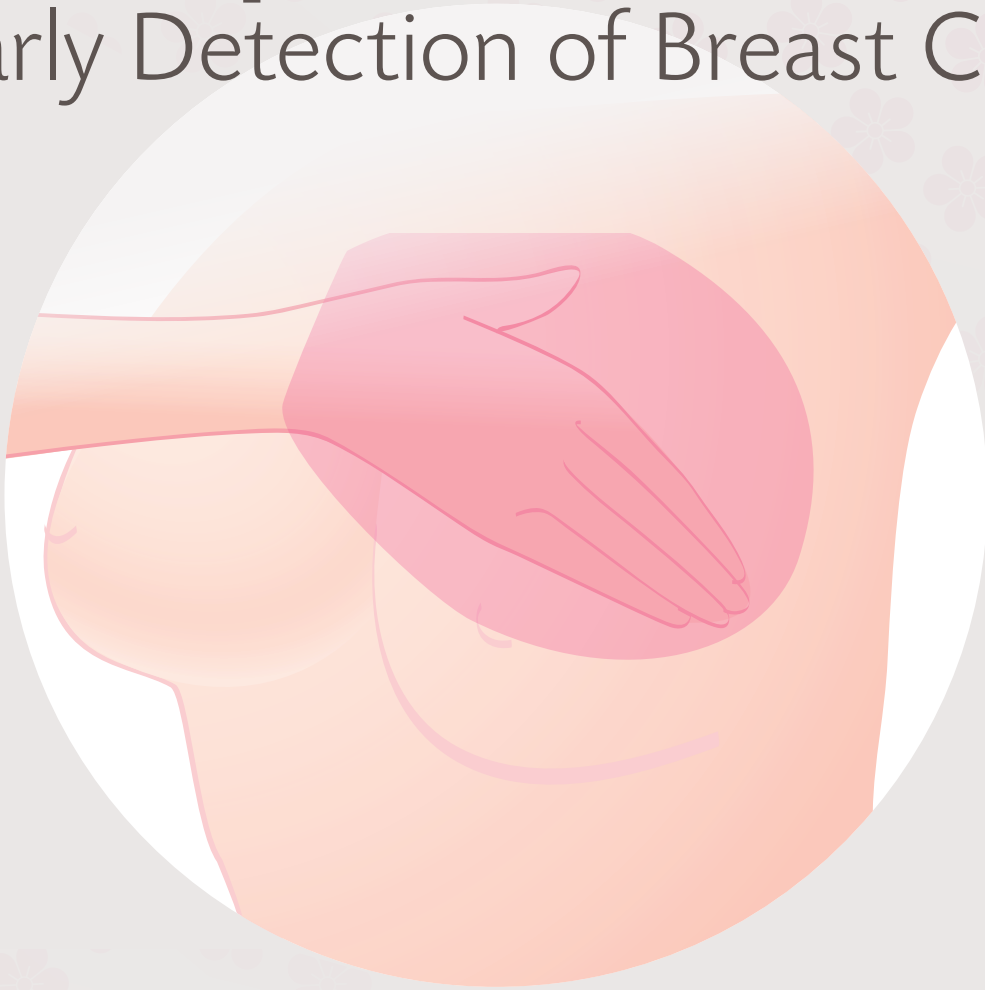




Supports
Pink Ribbon
Movement

Breast Care Glove[®]

Self-Palpation Glove for Early Detection of Breast Cancer



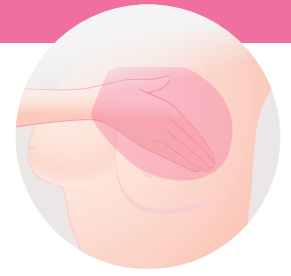
✿ *Latex Free*

✿ *Easy to use*

✿ *Powder Free*

✿ *Made in Japan*

Breast Care Glove® Self-Palpation Glove for Early Detection of Breast Cancer



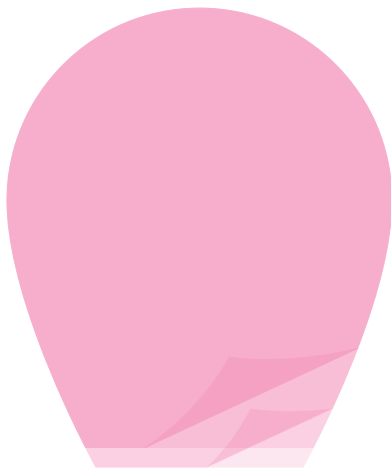
What is the Breast Care Glove® ?

The Breast Care Glove® has been developed to support breast self-examination. The glove is made from thin EVA film, that helps increase the sensitivity of the fingertips when doing self-palpation.

Breast Self-Palpation (Examination)

Visual self-check and self-palpation can help detect deformations in the breast which may or may not be caused by breast cancer.

Self-palpation of the breasts is recommended monthly after menstruation, or on a fixed day of the month for women going through menopause to identify any increase in size, and abnormality such as lumps or variations in mammary. The Breast Care Glove® allows for easier detection of such abnormalities.

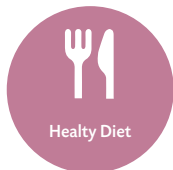


- ✿ *Reliable and safe*
- ✿ *Easy to use*
- ✿ *Made from EVA Film*
- ✿ *No dioxin emissions*
- ✿ *Latex and powder free*
- ✿ *Single use*

The thin layers of EVA Film allow increased receptivity in the fingertips

IMPORTANT

The Breast Care Glove® cannot replace a regular mammography screening. In any case of changes to the breasts, it is required to seek medical advice.



HEALTHY HABITS

While you can't do anything to change the risk factors such as being a woman, getting older or your family history, there are several other things you can do to reduce your risks and stay healthy.

BREAST CANCER FACTS

Breast cancer is the most common cancer among women worldwide, claiming the lives of hundreds of thousands of women each year and affecting countries at all levels of modernization. 1 in 8 women will be diagnosed with breast cancer before the age of 85.

THE SYMPTOMS

The most common symptom for breast cancer is a lump found in the breast or armpit. The lumps can be benign and do not spread to other parts of the body, or they can be malignant (cancerous).

The best way to identify breast cancer is to do a monthly breast self-exam and become familiar with your breasts' texture, cyclical changes, size and skin condition so you pick up any changes that might suggest cancer.

PATENT AND CERTIFICATION

Breast Care Glove® is patented internationally (Publication No. WO/2012/029419)

Breast Care Glove® is certified as General Medical Equipment in Japan (JMDN Code: 70976000)

Made in Japan

PRODUCED AND SOLD BY

ICST Corporation

S4 Tower 2F, 5-17-1, Kamiochiai, Chuo-ku, Saitama city, Saitama, 338-0001, JAPAN

Tel: +81-48-857-8026

Fax: +81-48-857-8041

